



Bureau *of* Business &  
Economic Research

# Colonia Population Estimation

Data Users Conference

2012 November 15

Daren Ruiz, MA

Bureau of Business and Economic Research  
MSC06 3510  
1 University of New Mexico  
Albuquerque NM, 87131-0001

- How do we count colonia populations?
- How do we estimate the socioeconomic and housing characteristics of colonia populations?

## 2010 Census Data

- Conducted on every person
- Conducted every 10 years
- Reported at the Block level
- Limited number of questions
  - ‘Short form’
  - Population counts
  - Basic demographic data

## 2006-2010 American Community Survey 5-Year Estimates

- Conducted on a 1 in 6 sample
- Conducted every year
- Reported at the Block Group level
- Greater number of questions
  - ‘Long form’
  - Population counts
  - Detailed demographic, economic, and housing estimates
  - Margin of Error

## 2010 Census Data

- Population Data
  - Total population counts
  - Number of households
  - Population living in households
- Housing Data
  - Total housing unit counts
  - Vacancy status
  - Tenure

## 2006-2010 American Community Survey 5-Year Estimates

- Population Estimates
  - Median household income
  - Ratio of income to poverty
  - Poverty status of persons
- Detailed Housing Estimates
  - Units in structure
  - Year structure built
  - House heating fuel

**COLONIA**

**POPULATION**

**ESTIMATION**

**PROCESS**

Define



Locate



Overlay  
Census  
Blocks



Select Blocks  
that Capture  
the Colonia



Tabulate  
Block  
Population

# Many Colonia Definitions

Define



- U.S. Department of Housing and Urban Development
- U.S. Environmental Protection Agency
- U.S. Department of Agriculture Rural Development
- Common usage, i.e. Pajarito Mesa

# U.S. Department of Housing and Urban Development

Define



- Must be in Arizona, California, New Mexico, or Texas
- Must be within 150 mile of the U.S.-Mexico border
- Must not be within a metropolitan statistical area with a population greater than 1 million
- Must lack:
  - Potable water supply
  - Adequate sewage system
  - Decent, safe, and sanitary housing
- Must have existed before 1990 November

# HUD Colonia Definition

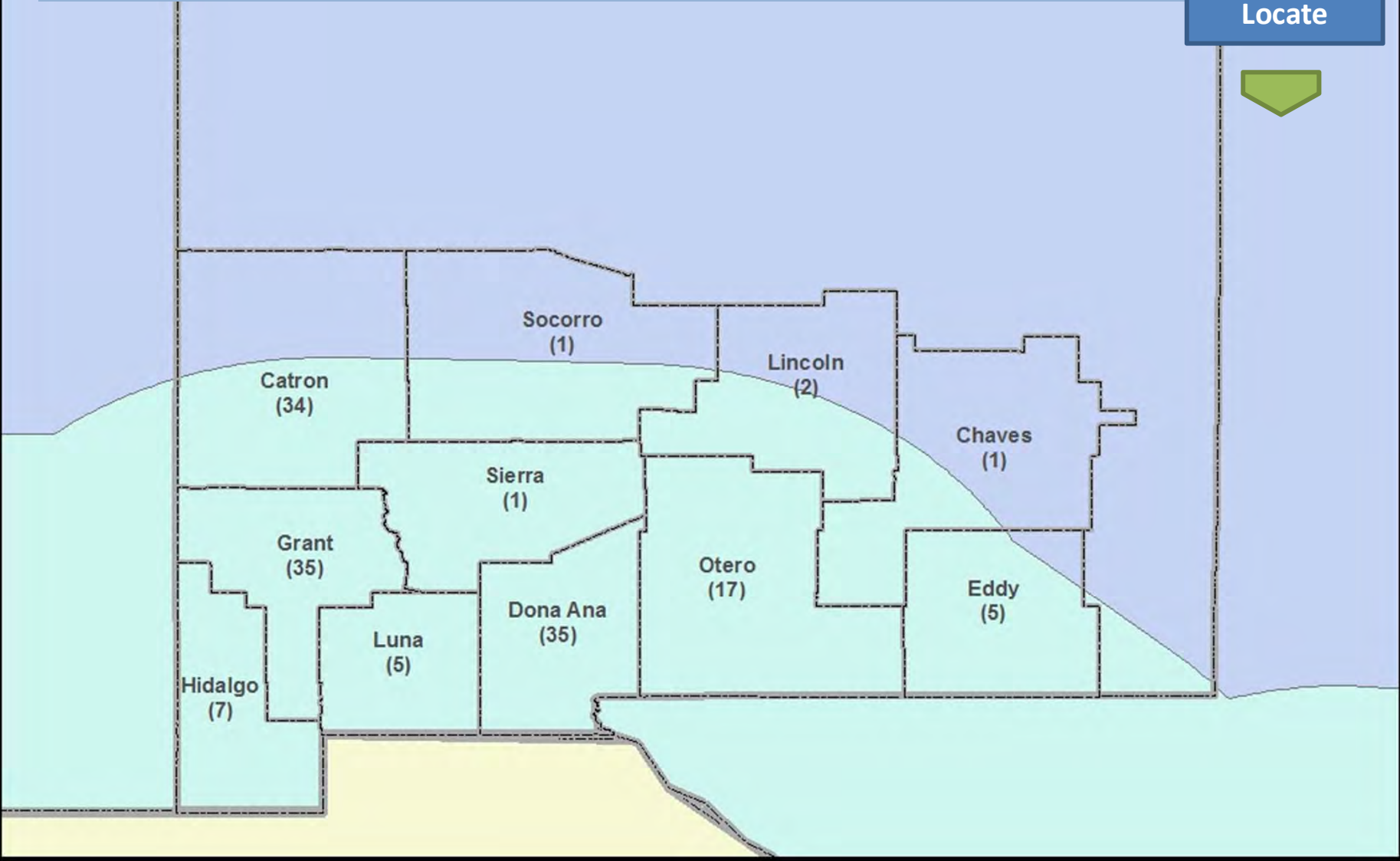
Define





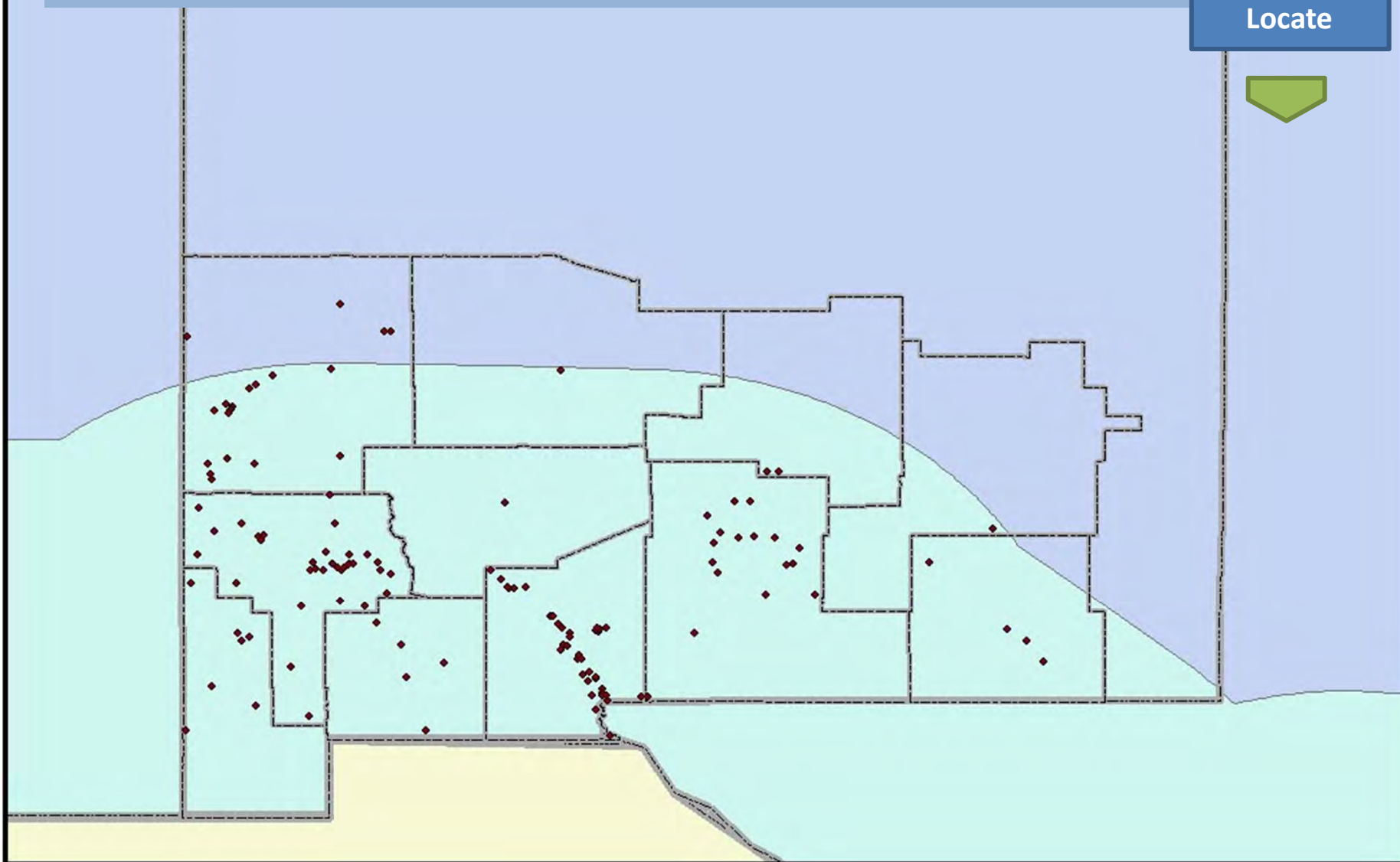
# County Name (Number of Colonias)

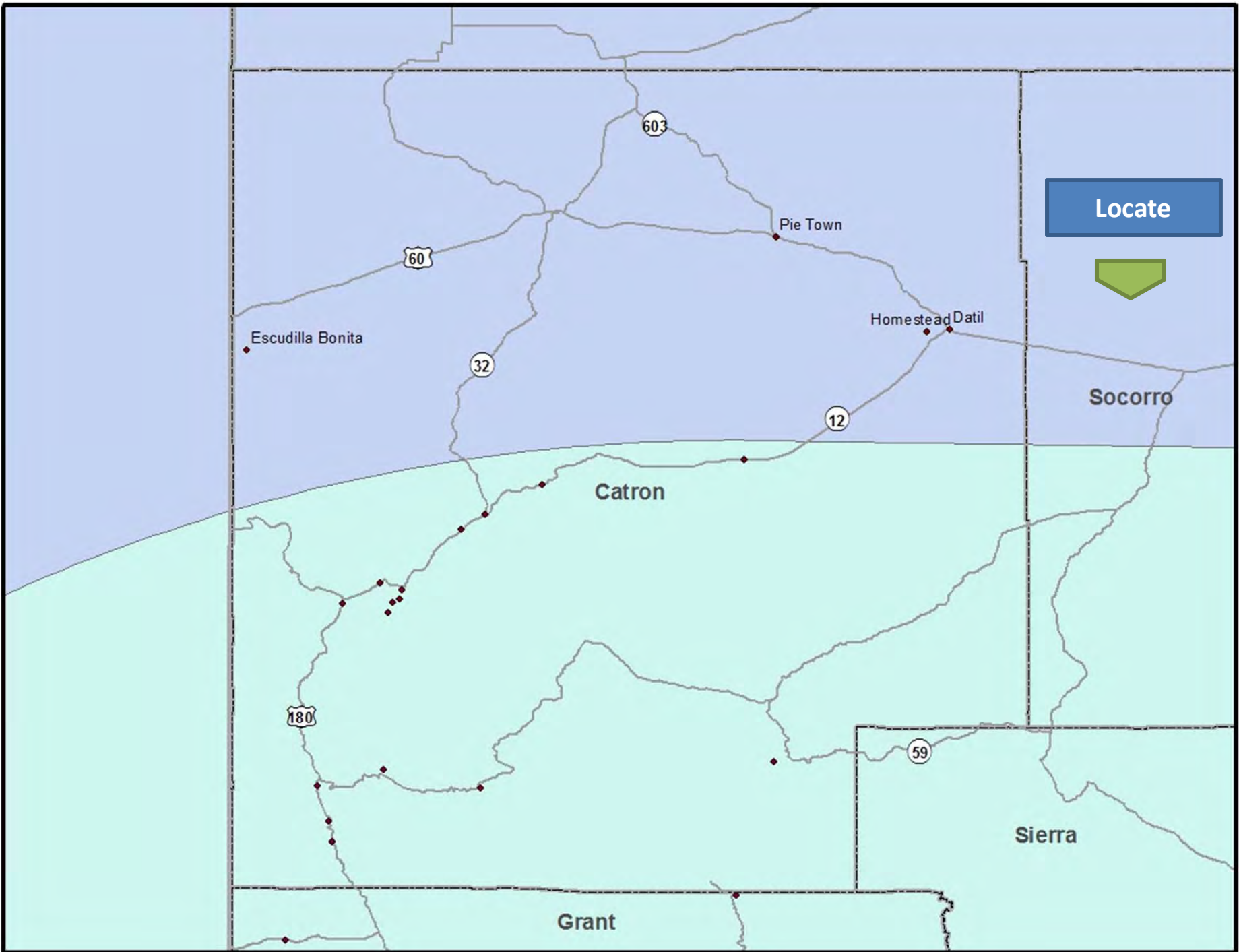
Locate



# Colonia Locations NMSU Study

Locate





Locate



Escudilla Bonita

Pie Town

Homestead Datil

Socorro

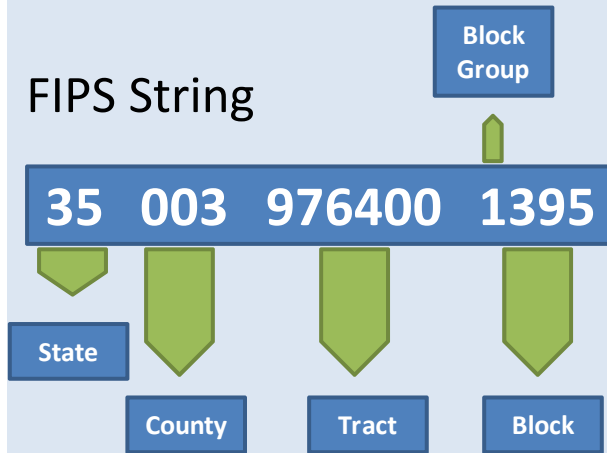
Catron

Sierra

Grant

# Pie Town Total Population

FIPS String



Candidate Colonia Blocks	Total Population
350039764001369	6
350039764001370	5
350039764001371	2
350039764001372	2
350039764001373	0
350039764001375	0
350039764001394	14
350039764001395	0
350039764001396	9
350039764001397	0
350039764001398	0
350039764001399	0
350039764001400	1
350039764001450	0
350039764001451	0
350039764001946	0
350039764001947	0
350039764001948	0
350039764001956	3
350039764001957	0
350039764001958	2
<b>Total</b>	<b>44</b>

↓  
**Tabulate  
Block  
Population**

**COLONIA**

**SOCIOECONOMIC**

**AND**

**HOUSING**

**CHARACTERISTIC**

**ESTIMATION**

**PROCESS**

Select Block  
Groups



Tabulate  
Block Group  
Population



Determine  
Reliability

# Pie Town Total Housing Units

Select Block  
Groups

Colonia Name	Pie Town
Block Population	44
Block Group	Catron Co., CT9764, BG1
Block Group Population	1,923
% Block Population of Block Group Population	2%
Total Housing Units	1,701



Tabulate  
Block Group  
Population



Determine  
Reliability

## Limitations:

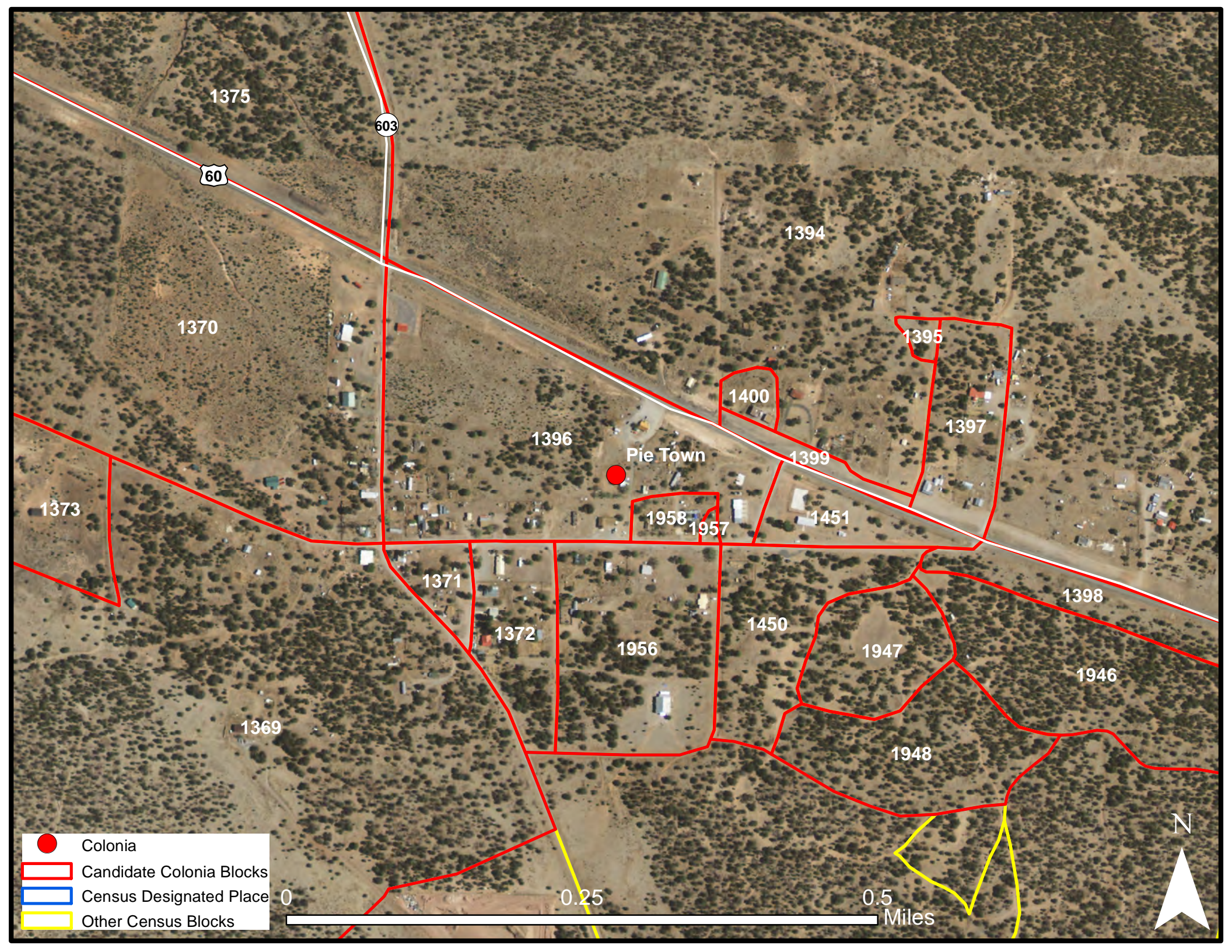
- Population counts are only as accurate as census counts.
- Colonias may neighbor each other, but their extents can not be delineated through aerial photography.
- The colonia may be incorporated or a Census Designate Place and the method may produce different data and/or estimates.
- Reliability of colonia socioeconomic and housing characteristics varies greatly.

## Useful links

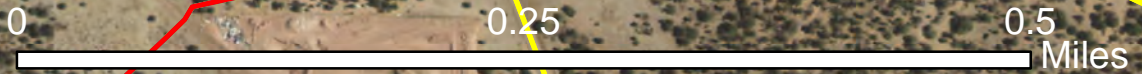
- <http://www.hud.gov/local/nm/groups/coloniasnm.cfm>
- [http://nmdfa.state.nm.us/Local\\_Government.aspx](http://nmdfa.state.nm.us/Local_Government.aspx)
- <http://donaanacounty.org/health/colonias/>
- <http://bber.unm.edu/colonias.htm>

**Thank you.**

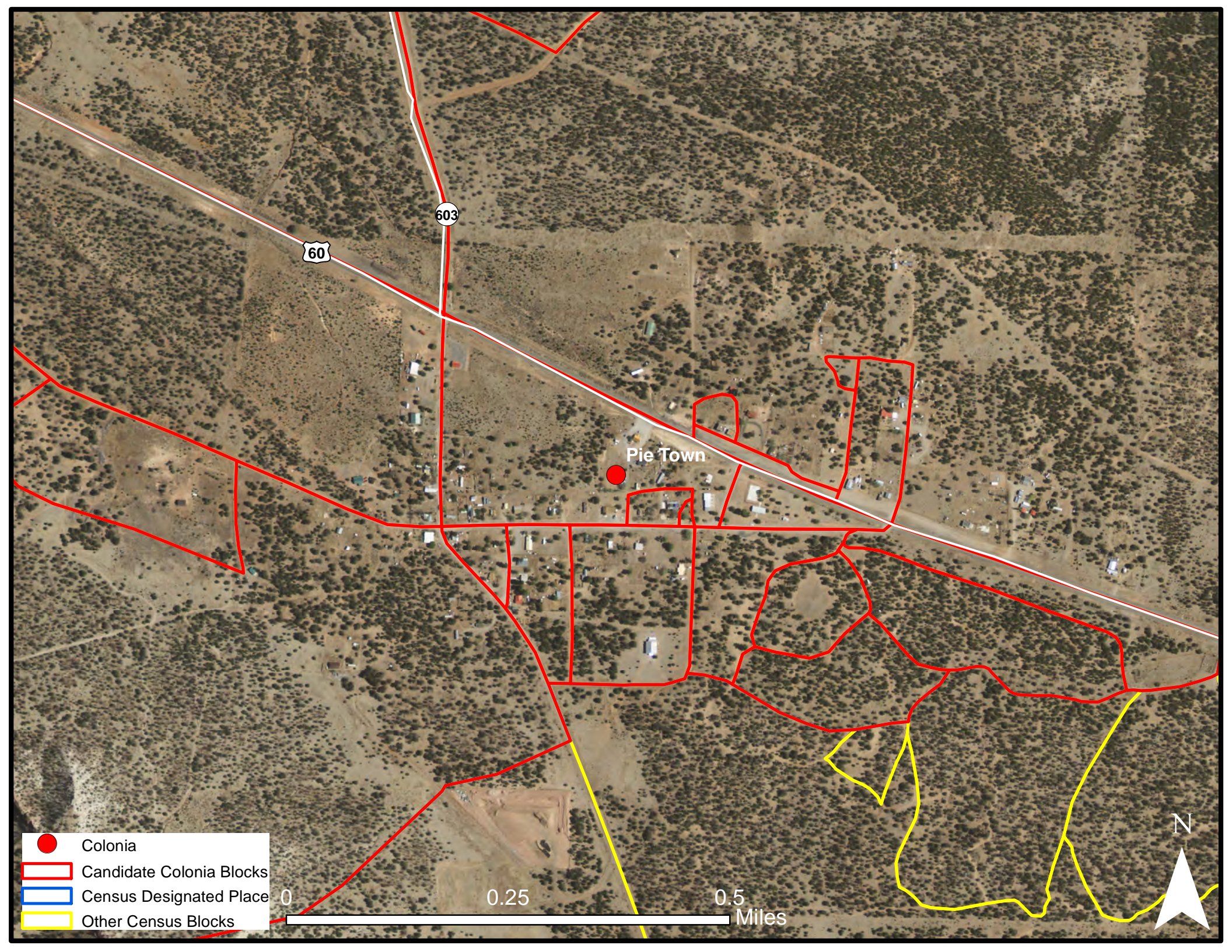




- Colonia
- Candidate Colonia Blocks
- Census Designated Place
- Other Census Blocks







60

603

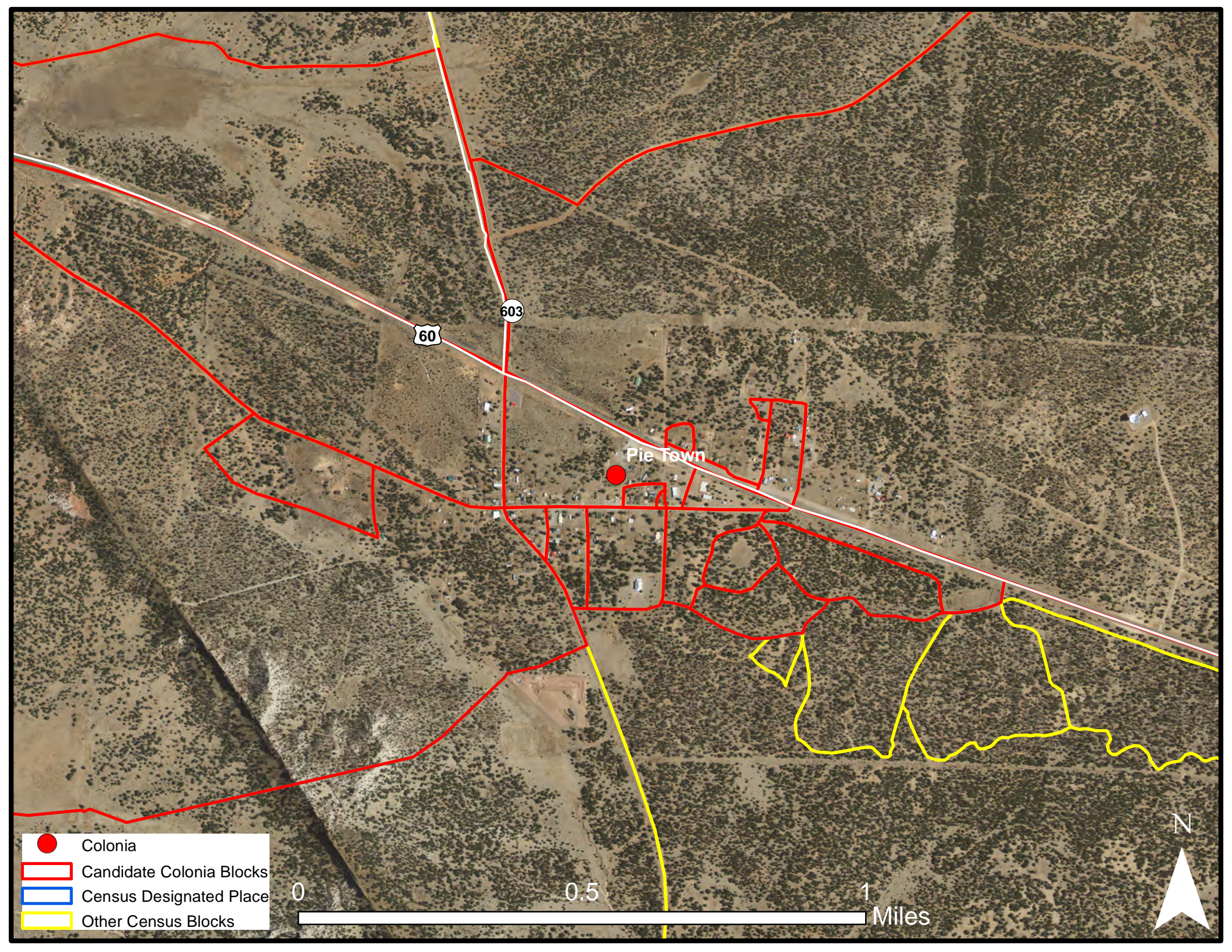
Pie Town

- Colonia
- ▭ Candidate Colonia Blocks
- ▭ Census Designated Place
- ▭ Other Census Blocks

0 0.25 0.5 Miles





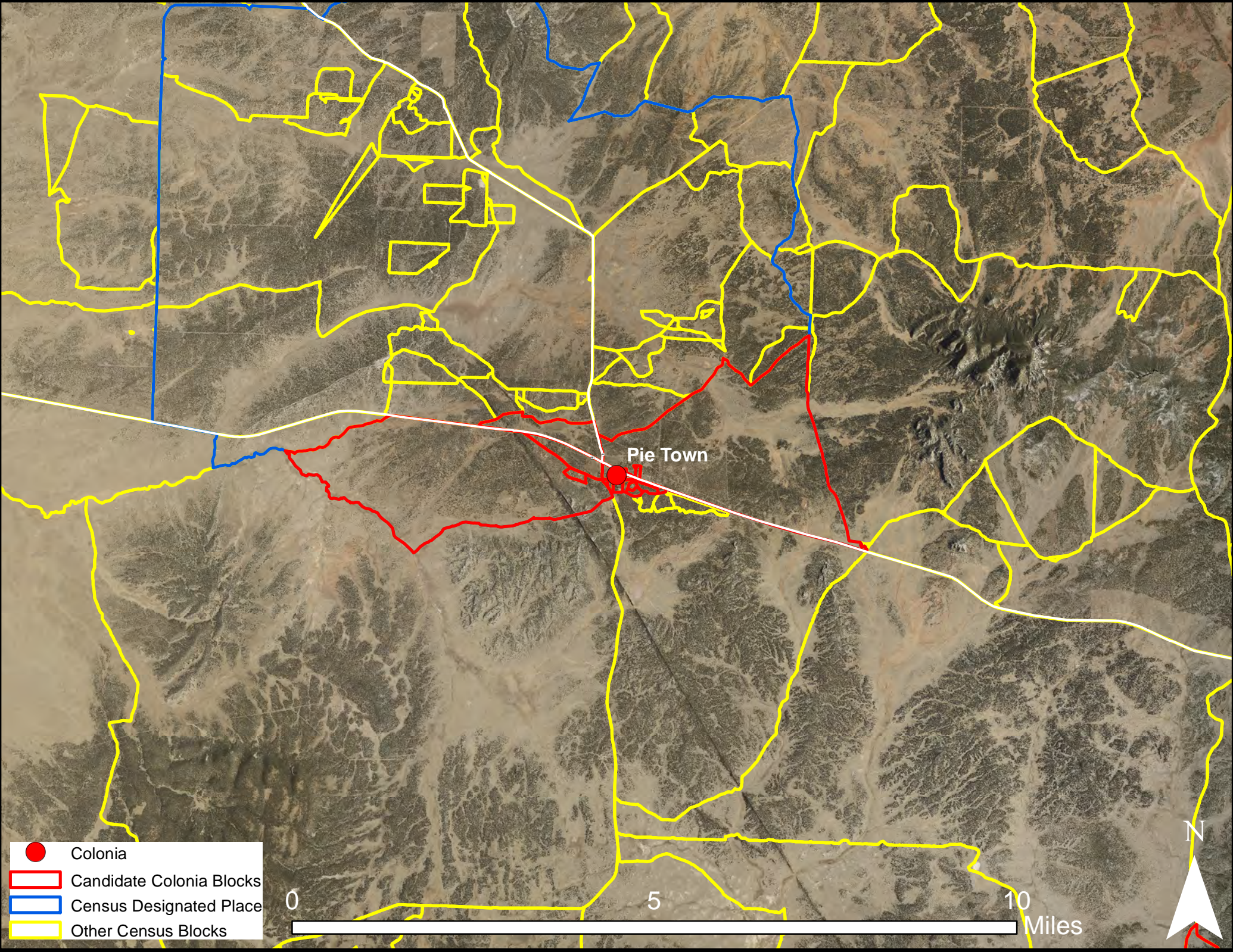


- Colonia
- ▭ Candidate Colonia Blocks
- ▭ Census Designated Place
- ▭ Other Census Blocks

0 0.5 1 Miles







- Colonia
- ▭ Candidate Colonia Blocks
- ▭ Census Designated Place
- ▭ Other Census Blocks

0 5 10 Miles

